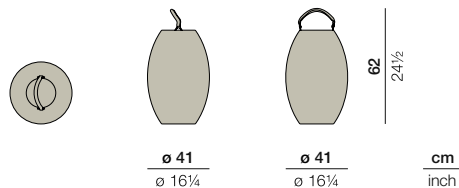


DALA

Lantern

Design by **Stephen Burks** | Item code: **073062** | Weight **2,5 kg/6 lbs** | Volume **0,11 m³/4 cu ft**

Measurements



Collection: Designed using the same mesh structure and environmentally-friendly fiber as the DALA furniture, the DALA planter and lantern are the perfect complement to any DEDON collection. Each piece is hand-woven using richly textured strands of DEDON's groundbreaking new ecological fiber.

Lantern: This DALA lantern features open weaving to let candlelight through. Elegant, man-made leather handles allow to you hang it or place it on the ground.

Frame: Aluminum

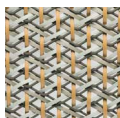
Finishing: Frame is electrostatic powder-coated. Fiber is High-Density Polyethylene (HDPE).

Characteristics: Colorful, distinctive, innovative, versatile, practical, ecological

Options: An additional hanger is available to hang the lantern

Frame Maintenance: Clean with soft cloth and warm water. Contact with chlorinated pool water should be avoided. Areas splashed with chlorinated water should be cleaned with ordinary water.

Fiber Standard



534
stone

Additional Items



Candle holder



Hanger for lantern
073092000

To learn more about DEDON, our collections and warranty policy, please visit our website –

www.dedon.de

0116

DEDON