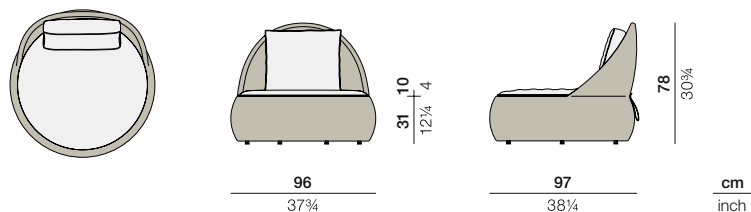


DALA

Lounge chair

Design by **Stephen Burks** | Item code: **073006** | Weight **9,3 kg/21 lbs** | Volume **0,72 m³/25 cu ft** | COM (Customer Own Material): **m/5.00 yd** (plain fabric only)

Measurements



Collection: DALA takes inspiration from the artisanship and improvised seating arrangements of the developing world. Surface and structure merge in this versatile collection by Stephen Burks, each piece starting as a powder-coated frame of aluminum mesh through which DEDON's master weavers thread colorful strands of our revolutionary new ecological fiber.

Lounge chair: Comfortable, casual and generously proportioned, the DALA Lounge Chair comes with a color-coordinated back and seat cushion made with high-tech Batyline® fabric.

Frame: Aluminum

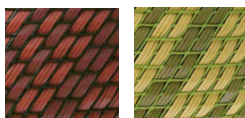
Finishing: Frame is electrostatic powder-coated. Fiber is High-Density Polyethylene (HDPE).

Characteristics: Colorful, distinctive, innovative, versatile, practical, ecological

Frame Maintenance: Clean with soft cloth and warm water. Contact with chlorinated pool water should be avoided. Areas splashed with chlorinated water should be cleaned with ordinary water.

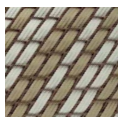
Cushion Maintenance: All cushion covers can be removed and washed.

Colors



532
fire

533
grass



534
stone

Additional Items



Cover

Fabrics

fire: **95073037735 + 95073005735**
grass: **95073037761 + 95073005761**
stone: **95073037762 + 95073005762**

Please see Fabric Options Fact Sheet

Deco cushions



Recommended deco cushions, ø40 cm + 50x50 cm

fire: 1x 95050088629 + 1x 95050082631 (curl red/chambray red)

grass: 1x 95050088511 + 1x 95050082630 (curl musk/chambray green)

stone: 1x 95050088613 + 1x 95050082632 (curl taupe/chambray noisette)

To learn more about DEDON, our collections and warranty policy, please visit our website –

www.dedon.de

0116

DEDON