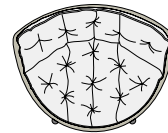


MBRACE

Lounge chair

Design by **Sebastian Herkner** | Item code: **085006** | Weight **7,6 kg/17 lbs** | Volume **0,25 m³/25 cu ft** | COM (Customer Own Material): **2,45 m/3.75 yd** (plain fabric only)

Measurements



107
42¼

35 8
13¾ 5¼

84
33

78
30¾

cm
inch

Collection: Taking a joyfully unconventional approach to poolside furniture, MBRACE by Sebastian Herkner brings together DEDON Fiber seating and a solid teak base to create a unique range of cosy, cocooning lounge chairs. Available in wingback, lounger and rocking chair versions, MBRACE features a mesh-like triaxial weave and comes with optional cushion sets to suit any taste.

Lounge chair: This low-back lounger features a triaxial open-weave seat, a solid-teak base and a choice of comfortable seat cushions.

Frame: The frame consists of aluminum. The base consists of premium teak.

Finishing: The frame is electrostatic powder-coated in a color similar to that of the fiber. The base consists of natural-finish teak.

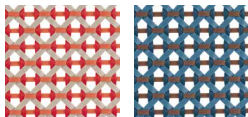
Characteristics: Friendly, engaging, embracing, innovative, exceptionally comfortable

Options: This item is available with a cushion or a seat cushion.

Frame Maintenance: Clean with a soft cloth and warm water. Wash the bases with warm water in which natural soap flakes have been dissolved.

Cushion Maintenance: While the covers cannot be removed, the complete cushions may be washed by hand.

Fiber Standard



112
spice

114
atlantic



115
pepper

Additional Items



Cover

Fabrics

Cushion: **95085006**

Seat cushion: **95085016**

Please see Fabric Options Fact Sheet

To learn more about DEDON, our collections and warranty policy, please visit our website –

www.dedon.de

0115

DEDON