

# MBRACE

Wing chair

Design by **Sebastian Herkner** | Item code: **085004** | Weight **8,6 kg/19 lbs** | Volume **0,92 m<sup>3</sup>/33 cu ft** | COM (Customer Own Material): **3,80 m/4.00 yd** (plain fabric only)

## Measurements



107  
42¼

95 8  
13¾ 5¼

89  
35

97  
38¼

cm  
inch

**Collection:** Taking a joyfully unconventional approach to poolside furniture, MBRACE by Sebastian Herkner brings together DEDON Fiber seating and a solid teak base to create a unique range of cosy, cocooning lounge chairs. Available in wingback, lounger and rocking chair versions, MBRACE features a mesh-like triaxial weave and comes with optional cushion sets to suit any taste.

**Wing chair:** This wing-back lounger features a triaxial open-weave seat, a solid-teak base and a choice of comfortable seat cushions.

**Frame:** The frame consists of aluminum. The base consists of premium teak.

**Finishing:** The frame is electrostatic powder-coated in a color similar to that of the fiber. The base consists of natural-finish teak.

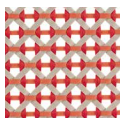
**Characteristics:** Friendly, engaging, embracing, innovative, exceptionally comfortable

**Options:** This item is available with a cushion or a seat cushion.

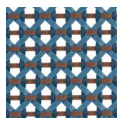
**Frame Maintenance:** Clean with a soft cloth and warm water. Wash the bases with warm water in which natural soap flakes have been dissolved.

**Cushion Maintenance:** While the covers cannot be removed, the complete cushions may be washed by hand.

## Fiber Standard



112  
spice



114  
atlantic



115  
pepper

## Additional Items



Cover

## Fabrics

Cushion: **95085004**

Seat cushion: **95085016**

Please see Fabric Options Fact Sheet

To learn more about DEDON, our collections and warranty policy, please visit our website –

[www.dedon.de](http://www.dedon.de)

0115

DEDON